

# XRF Scientific Ltd

## AMMONIUM IODIDE (AI) TABLETS

### AMMONIUM IODIDE TABLETS / 5000/bottle

#### Description

Used extensively as a releasing or cleaning agent.

Average weight	21.4 mg
Max variation	± 5%
Composition	66.6% ammonium iodide 33.4% starch

#### Additives and Flux.

Additives are usually added to the flux for a number of reasons:

- to protect the platinum/gold ware,
- to oxidise sulphides to sulphates,
- to improve bead quality and in some cases, to add a heavy absorber element to reduce matrix effects even further

#### AMMONIUM IODIDE (AI) INJECTOR

XRF Scientific Ltd manufactures a machine that has an automatic ammonium iodide injector unit. This unit automatically injects precisely sized ammonium iodide tablets into the crucible.

#### LOADING

The left-hand hole (in relation to the moulds/burners) is for loading the AI tablet. During the operation cycle the mould bar will be seen to move over the crucibles, at which time the tablet is propelled to the delivery outlet hole and the tablet is injected in to the crucible.

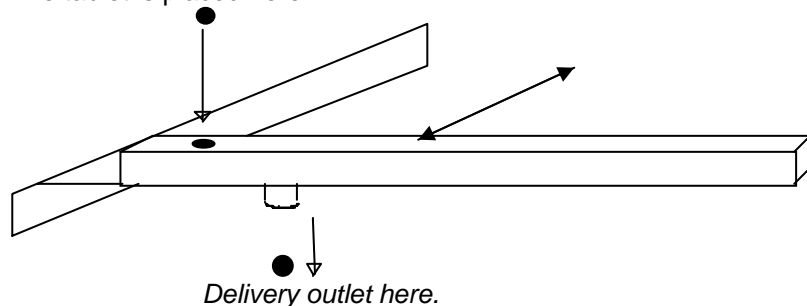
#### INJECT

During the normal operation of the machine an injection of Ammonium Iodide can be done at any time, eg. during PRE-MELT, MELTING or SWIRLING cycles.

The AI inject timer will commence timing down when the machine is started and will inject when the timer reaches zero, eg. If the AI inject timer is set to 60 seconds, an injection will occur 60 seconds after the start button is pressed.

Note, the inject timer will automatically disengage at the end of the normal SWIRLING cycle. Injections cannot be carried out after the swirling cycle has been completed.

The tablet is placed here.



XRF Scientific Ltd  
1/12 Farrall Road  
Midvale, WA 6056

Tel: 61 8 9274 9100 Fax 61 8 9274 9144

[www.xrfscientific.com](http://www.xrfscientific.com)

e-mail: [sales@xrfscientific.com](mailto:sales@xrfscientific.com)